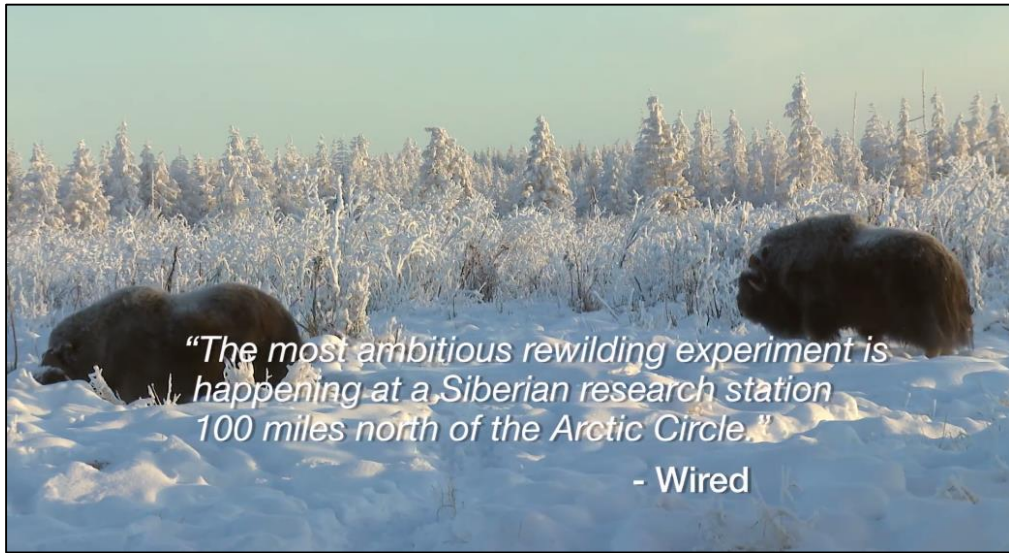


Rewilding megafauna in the Siberian Arctic to mitigate climate



Preventing carbon-rich permafrost soils in the Siberian Arctic from thawing and releasing greenhouse gases into the atmosphere is essential for mitigating climate warming. Rewilding megaherbivores could provide a novel approach for protecting vulnerable permafrost soils from thaw by trampling snow and altering vegetation cover.

Nikita Zimov, Director of Pleistocene Park, will guide us through the past and the future of Pleistocene Park, a remote natural area in the Siberian Arctic recently rewilded with bison, musk ox, moose, horses, reindeer, and yaks. He will explore the Park's link to the Mammoth Steppe, a highly-productive grassland ecosystem that dominated the planet during the Ice Age. The Park has gained widespread media attention, including recent features in several well-respected outlets, like *Science*, *The Atlantic*, *The Telegraph*, PBS News Hour, and the HBO News Series, *Vice*.



Friday, December 8th, 2 – 3 p.m.
Tully Auditorium in Thompson Hall

Co-hosted by the Departments of Forestry and Wildlife, Aquaculture, and Fisheries
Mississippi State University, College of Forest Resources



MISSISSIPPI STATE UNIVERSITY™
COLLEGE OF FOREST RESOURCES

Forest & Wildlife Research Center